



INCLUSIVE LEARNING

Course Pathways
2024 - 2025

*Transforming lives through excellence
in education and training*



St Helens College



CURRICULUM INTENT

INCLUSIVE LEARNING

Contents

2 - 3
Curriculum Intent
Inclusive Learning

4 - 5
Life Skills
Sensory and
Communication

6 - 7
Life Skills
Personal Development

8 - 9
Life Skills
Wider Community
and Opportunities

10 - 11
Work Skills
Employability and
Further Studies

12 - 13
Work Skills
Pre Internship

14 - 15
Work Skills
Supported Internship

16 - 17
Work Skills
Creative Industries

18
Student Success
Supported Internship

19
Notes



Personalised
Learning
Approach



Small Class
Sizes



Inclusive
Learning and
Pastoral Care

We want our students to be able to be fully engaged in their own choices, possessing the ability to make informed and safe decisions about their future steps into independent living or work, as well as becoming active and productive members of the local and wider community.

During their time at the College, students have the opportunity to develop their work skills including communication and teamwork along with life skills such as money management, cookery and safe travel.

Students follow an individualised programme of study made up of component parts including maths, English, formal qualifications, RARPA, interventions and

work experience designed to meet their EHCP outcomes and their identified individual development.

Students will leave us with skills for life and an understanding of the importance of their physical and mental wellbeing.

Students will choose their pathway depending on their own goals for the future.

Inclusive Learning Intention Statements

1. All students will experience a broad and balanced curriculum that will support them in preparing for adulthood.
2. All students will follow a personalised programme made up of component parts which support their individual development and EHCP outcomes.
3. All students will follow a pathway that is matched to support their future goals - Life Skill or Work Skills.

LIFE SKILLS

SENSORY AND COMMUNICATION PATHWAY

Pathway Aim

This pathway enables students to follow personalised programme of study to support their EHCP outcomes with a focus on the preparation for adulthood outcomes of Independent Living, Community Inclusion and Health, Wellbeing and Relationships. The pathway will develop students' communication and independence through a sensory curriculum, and they will benefit from high levels of support from both college staff and links with external agencies.

Pathway Key Objectives

- Students will demonstrate and apply making choices that support the development of independent living skills.
- Students will access the local community.
- Students will develop an awareness of personal safety.

Pathway Delivery

- **Site:** Knowsley Community College and St Helens Town Centre Campus.
- Pre Entry.
- 1 year programme.



Pathway Transition

- Transition will be determined annually through the EHCP Annual Review process, reflecting the individual students progress made within the academic year, level achieved and college attendance.
- Progress routes could include further education or transition to a non-educational destination.

LIFE SKILLS

PERSONAL DEVELOPMENT PATHWAY

Pathway Key Objectives

- Provide students with the opportunity to develop skills and experiences in preparing to live a more independent life with the focus on Preparation for Adulthood Outcomes.
- Participate in regular cookery sessions which focus on healthy eating.
- Maintain a healthy lifestyle through exercise, positive mental health and healthy eating.
- Access the local community and feel safe and confident doing so.

Pathway Delivery

- **Site:** Knowsley Community College and St Helens Town Centre Campus.
- Delivered at Entry 1 to Entry 3.
- 1 year programme.
- Theory work and development of portfolio.



Pathway Transition

- Transition will be determined annually through the EHCP Annual Review process, reflecting the individual students progress made within the academic year, level achieved and college attendance.
- Progress routes could include further education or transition to a non-educational destination.

LIFE SKILLS

WIDER COMMUNITY AND OPPORTUNITIES PATHWAY

Pathway Key Objectives

- Provide students with the opportunity to develop skills and experiences in preparing to live a more independent life with the focus on Preparation for Adulthood Outcomes.
- Students will consider employment options including community work, volunteering and paid work.
- Students will undertake voluntary work experience as part of a group or individually with support.
- Access the local community and develop their understanding of how to feel safe and confident doing so.

Pathway Delivery

- **Site:** Knowsley Community College and St Helens Town Centre Campus.
- Delivered at Entry 1 to Entry 3.
- 1 year programme.
- Theory work and development of portfolio.



Pathway Transition

- Transition will be determined annually through the EHCP Annual Review process, reflecting the individual students progress made within the academic year, level achieved and college attendance.
- Progress routes could include further education or transition to a non-educational destination.

WORK SKILLS

EMPLOYABILITY AND FURTHER STUDIES

Pathway Key Objectives

- Students will be able to make an informed choice about their future opportunities.
- Students will develop transferable skills for the workplace including teamwork, communication and independence.
- Students will have the opportunity to participate in internal or external work placements, job shadowing or vocational tasters.

Pathway Delivery

- **Site:** Knowsley Community College and St Helens Town Centre Campus.
- Delivered at Entry 3 to Level 1.
- 1 year programme.
- Theory work and development of portfolio.



Pathway Transition

- Transition will be determined annually through the EHCP Annual Review process, reflecting the individual students progress made within the academic year, level achieved and college attendance.
- Progress routes could include further education or transition to a non-educational destination.

WORK SKILLS

PRE INTERNSHIP PATHWAY

Pathway Aim

This pathway is for students who are coming to the end of their time in education and are working towards a Supported Internship Programme but who need additional time to prepare for a transition into employment. Students will access lessons to further develop their literacy and numeracy skills, along with gaining the necessary employability skills to make the transition into employment.

Pathway Key Objectives

- Students will access a range of work tasters within a variety of industry settings.
- Students will create an individualised vocational profile based on real experiences.
- Students will develop a range of transferable work related skills to support future employment.

Pathway Delivery

- **Site:** St Helens Town Centre Campus and Knowsley Community College.
- 1 year programme.



Pathway Transition Routes

Transition will be determined annually through the EHCP Annual Review process, reflecting the individual students progress made within the academic year, level achieved and college attendance. Progress routes for this pathway will be onto a Supported Internship Programme.

WORK SKILLS

SUPPORTED INTERNSHIP

Pathway Key Objectives

- Students to enhance their employability skills through practical work-related learning and extended work experience.
- Students to show work-based competencies through systematic instruction within their chosen career sector.
- To receive support with independent living challenges that will support them in their transition out of education and into work.

Pathway Delivery

- **Site:** Knowsley Community College and St Helens Town Centre Campus.
- Delivered through RARPA.
- 1 year programme.
- Theory work and development of portfolio.



Pathway Transition

- Transition will be determined annually through the EHCP Annual Review process, reflecting the individual students progress made within the academic year, level achieved and college attendance.
- Progress routes could include paid employment, supported employment, traineeships or apprenticeships.

WORK SKILLS

CREATIVE INDUSTRIES

Pathway Key Objectives

- Provide students with the opportunity to develop skills and knowledge along with experiences in the creative industries sector.
- Students will develop an understanding of the professional skills needed to succeed in a variety of creative industries.
- Students will participate in projects and exhibitions.
- Students will participate in community visits and trips linked to creative industries.

Pathway Delivery

- **Site:** Knowsley Community College.
- Delivered at L1.
- 1 year programme.
- Theory work, team projects and development of portfolio.



Pathway Transition

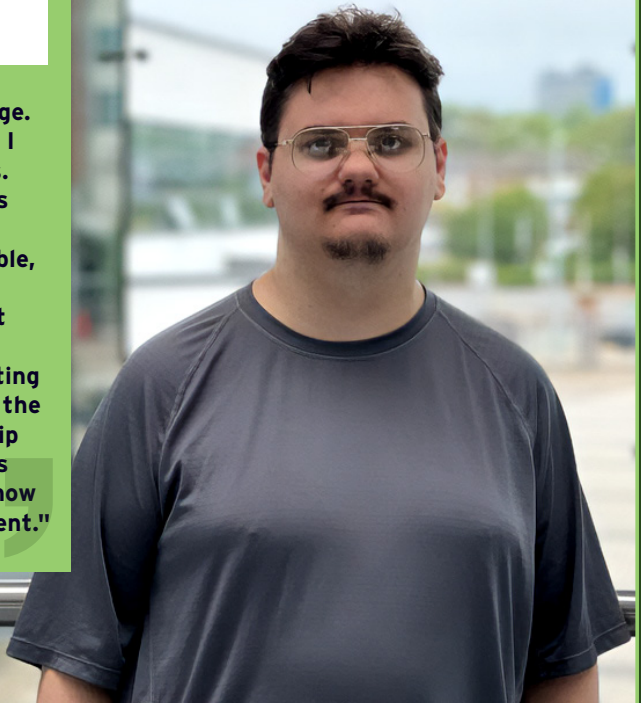
- Transition will be determined annually through the EHCP Annual Review process, reflecting the individual students progress made within the academic year, level achieved and college attendance.
- Progress routes could include paid employment, progress onto a vocationally related course or supported internship.

STUDENT SUCCESS

SUPPORTED INTERNSHIP

★ Hayden

"I loved attending College. It provided routine and I enjoyed making friends. Although the campus is big, I felt safe and my tutors were approachable, kind and always there to help. One of the best parts of the Supported Internship was completing a work placement with the College's Apprenticeship Team and going on days out to Liverpool. I am now ready to find employment."



NOTES





CONTACT

If you would like more information on our range of courses or would like to arrange a visit, please contact our Transition Keyworkers:

Knowsley Community College

0151 477 5713

St Helens College

01744623131

Or email

Transition@sthelens.ac.uk



St Helens College

